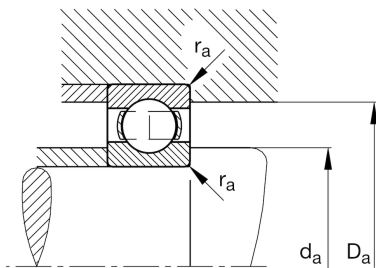
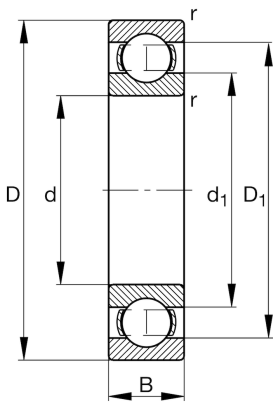
**FAG****6036-M**

Deep groove ball bearing

Deep groove ball bearing 60.-M, single row,
solid brass cage

Technické informace

**Main Dimensions & Performance Data**

d	180 mm	Bore diameter
D	280 mm	Outside diameter
B	46 mm	Width
C_r	201.000 N	Basic dynamic load rating, radial
C_{0r}	199.000 N	Basic static load rating, radial
C_{ur}	8.400 N	Fatigue load limit, radial
n_G	4.050 1/min	Limiting speed
n_{gr}	3.300 1/min	Reference speed
$\approx m$	10,6 kg	Hmotnost

Mounting dimensions

$d_{a \min}$	190,2 mm	Minimum diameter shaft shoulder
$D_{a \max}$	269,8 mm	Maximum diameter of housing shoulder
$r_{a \max}$	2,1 mm	Maximum fillet radius

Dimensions

r_{\min}	2,1 mm	Minimum chamfer dimension
D_1	249,25 mm	Shoulder diameter outer ring
d_1	211,8 mm	Shoulder diameter inner ring

Temperature range

T_{\min}	-30 °C	Operating temperature min.
T_{\max}	200 °C	Operating temperature max.

Calculation factors

f_0	15,6	Calculation factor
-------	------	--------------------