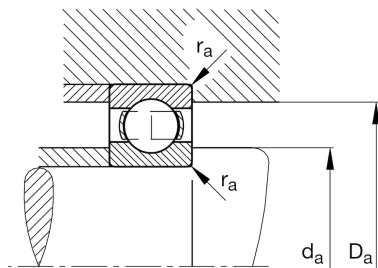
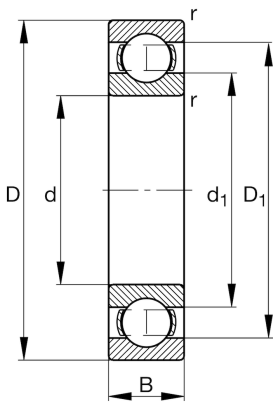


**FAG****6215-J20AB-C3** [↗](#)

Deep groove ball bearing

Deep groove ball bearing 62...J20AB, single row, steel sheet metal cage, ceramic coated

Technické informace

**Main Dimensions & Performance Data**

d	75 mm	Bore diameter
D	130 mm	Outside diameter
B	25 mm	Width
C_r	70.000 N	Basic dynamic load rating, radial
C_{0r}	49.000 N	Basic static load rating, radial
C_{ur}	3.300 N	Fatigue load limit, radial
n_G	7.800 1/min	Limiting speed
n_{gr}	5.900 1/min	Reference speed
$\approx m$	1,16 kg	Hmotnost

Mounting dimensions

$d_{a \min}$	84 mm	Minimum diameter shaft shoulder
$D_{a \max}$	121 mm	Maximum diameter of housing shoulder
$r_{a \max}$	1,5 mm	Maximum fillet radius

Dimensions

r_{\min}	1,5 mm	Minimum chamfer dimension
D_1	113,3 mm	Shoulder diameter outer ring
d_1	92,1 mm	Shoulder diameter inner ring

Temperature range

T_{\min}	-30 °C	Operating temperature min.
T_{\max}	150 °C	Operating temperature max.

Calculation factors

f_0	14,6	Calculation factor
-------	------	--------------------