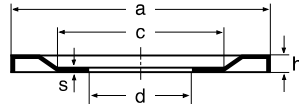
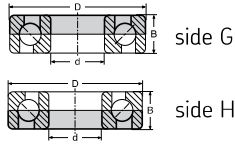


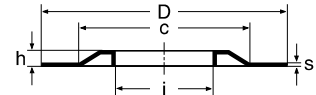
NILOS-Rings for single row angular contact ball bearings

Series 73 side G

Series 73 side H



AVG or AVH



JVG or JVH

Bearing	d	D	B	NILOS-Ring	a	c	d	h	s	NILOS-Ring	i	c	D	h	s
Series 73 side G															
7300	10	35	11	7300 AVG	30.6	20	10	2	0.3	7300 JVG	14	26	35	2	0.3
7301	12	37	12	7301 AVG	32.7	23	12	2	0.3	7301 JVG	15.2	26	37	2	0.3
7302	15	42	13	7302 AVG	36.5	26	15	2	0.3	7302 JVG	19	32	42	2	0.3
7303	17	47	14	7303 AVG	41.2	29	17	2	0.3	7303 JVG	20.5	36	47	2	0.3
7304	20	52	15	7304 AVG	44.8	33	20	2	0.3	7304 JVG	24.5	40	52	2	0.3
7305	25	62	17	7305 AVG	54.8	40	25	2.5	0.3	7305 JVG	30	46	62	2.5	0.3
7306	30	72	19	7306 AVG	64.8	48	30	2.5	0.3	7306 JVG	37.2	56	72	2.5	0.3
7307	35	80	21	7307 AVG	70.7	54	35	2.5	0.3	7307 JVG	41.9	60	80	3	0.3
7308	40	90	23	7308 AVG	80.5	60	40	3	0.3	7308 JVG	47.5	70	90	3	0.3
7309	45	100	25	7309 AVG	90.8	75	45	3	0.3	7309 JVG	52.3	80	100	3	0.3
7310	50	110	27	7310 AVG	98.9	80	50	3	0.3	7310 JVG	57.5	83	110	3	0.3
7311	55	120	29	7311 AVG	108	89	55	3	0.3	7311 JVG	64	90	120	3	0.3
7312	60	130	31	7312 AVG	117.5	95	60	3	0.3	7312 JVG	69.3	101	130	3	0.5
7313	65	140	33	7313 AVG	127.5	100	65	3.5	0.5	7313 JVG	75.3	110	140	3.5	0.5
7314	70	150	35	7314 AVG	137	110	70	3.5	0.5	7314 JVG	81	125	150	3.5	0.5
7315	75	160	37	7315 AVG	147	110	75	3.5	0.5	7315 JVG	87.2	125	160	3.5	0.5
7316	80	170	39	7316 AVG	157.5	130	80	3.5	0.5	7316 JVG	92.3	135	170	3.5	0.5
7317	85	180	41	7317 AVG	164	135	85	4	0.5	7317 JVG	97.8	144	180	4	0.5
7318	90	190	43	7318 AVG	174	140	90	4	0.5	7318 JVG	106	150	190	4	0.5
7319	95	200	45	7319 AVG	184	150	95	4	0.5	7319 JVG	110.5	160	200	4	0.5
7320	100	215	47	7320 AVG	199	165	100	4	0.5	7320 JVG	116	170	215	4	0.5
7321	105	225	49	7321 AVG	208	174	105	4	0.5	7321 JVG	121	180	225	4	0.5
7322	110	240	50	7322 AVG	219	179	110	4	0.5	7322 JVG	126	195	240	4	0.5
Series 73 side H															
7300	10	35	11	7300 AVH	32.7	23	10	2	0.3	7300 JVH	15.5	27	35	2	0.3
7301	12	37	12	7301 AVH	35.2	23	12	2	0.3	7301 JVH	17.5	29	37	2	0.3
7302	15	42	13	7302 AVH	39.5	27	15	2	0.3	7302 JVH	20.8	33	42	2	0.3
7303	17	47	14	7303 AVH	43.7	34	17	2.5	0.3	7303 JVH	23	36	47	2	0.3
7304	20	52	15	7304 AVH	48.8	35	20	2.5	0.3	7304 JVH	27.2	40	52	2	0.3
7305	25	62	17	7305 AVH	57.5	40	25	2.5	0.3	7305 JVH	32.2	47	62	2.5	0.3
7306	30	72	19	7306 AVH	67.8	48	30	2.5	0.3	7306 JVH	37.2	56	72	2.5	0.3
7307	35	80	21	7307 AVH	74.6	50	35	3	0.3	7307 JVH	45	65	80	2.5	0.3
7308	40	90	23	7308 AVH	83.5	67	40	3	0.3	7308 JVH	51	70	90	3	0.3
7309	45	100	25	7309 AVH	94.8	75	45	3	0.3	7309 JVH	56	80	100	3	0.3
7310	50	110	27	7310 AVH	103	83	50	3	0.3	7310 JVH	62	86	110	3	0.3
7311	55	120	29	7311 AVH	113.8	85	55	3	0.3	7311 JVH	67	93	120	3	0.3
7312	60	130	31	7312 AVH	122	100	60	3.5	0.5	7312 JVH	73	102	130	3	0.5
7313	65	140	33	7313 AVH	132	105	65	3.5	0.5	7313 JVH	77.5	110	140	3.5	0.5
7314	70	150	35	7314 AVH	142	117	70	3.5	0.5	7314 JVH	82.6	120	150	3.5	0.5
7315	75	160	37	7315 AVH	152	120	75	3.5	0.5	7315 JVH	87.2	125	160	3.5	0.5
7316	80	170	39	7316 AVH	162	123	80	3.5	0.5	7316 JVH	95	138	170	3.5	0.5
7317	85	180	41	7317 AVH	169	140	85	4	0.5	7317 JVH	100	140	180	4	0.5
7318	90	190	43	7318 AVH	180	140	90	4	0.5	7318 JVH	106	150	190	4	0.5
7319	95	200	45	7319 AVH	188	155	95	4	0.5	7319 JVH	115	160	200	4	0.5
7320	100	215	47	7320 AVH	199	165	100	4	0.5	7320 JVH	118	170	215	4	0.5
7321	105	225	49	7321 AVH	214	173	105	4	0.5	7321 JVH	127	180	225	4	0.5
7322	110	240	50	7322 AVH	229	183	110	4	0.5	7322 JVH	133	197	240	4	0.5