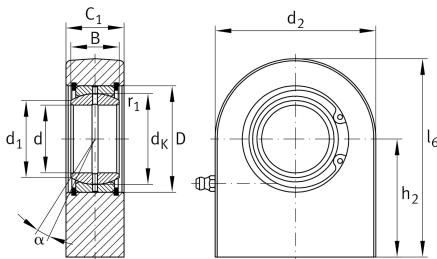


**GF60-DO-A** [↗](#)

Rod end

Materiálové číslo Schaeffler:  
0066344190000Hydraulic rod end, with rectangular welding  
face, requiring maintenance, sliding  
contact surface: steel/steel, open design

## Technické informace

**Main Dimensions & Performance Data**

$C_r$	314.000 N	Basic dynamic load rating, radial
$C_{0r}$	558.000 N	Basic static load rating, radial
$d$	60 mm	Bore diameter bearing
$d_2$	140 mm	Outer eye diameter
$l_6$	170 mm	Total length welding head
$D$	90 mm	Outside diameter bearing
$B$	44 mm	Width inner ring
$\approx m$	7,1 kg	Hmotnost

**Dimensions**

$d_k$	80 mm	Ball diameter
$\alpha$	6 °	Tilt angle
$C_1$	50 mm	Width of the rod end
$C_{1max}$	52,5 mm	Width of the rod end, max.
$h_2$	100 mm	Shank Length Welding Head
$d_{UT}$	-0,015 mm	Bore diameter bearing, lower tolerance
$d_{OT}$	0 mm	Bore diameter bearing, upper tolerance
$B_{UT}$	-0,15 mm	Width inner ring, lower tolerance
$B_{OT}$	0 mm	Width inner ring, upper tolerance
$G_r$	0,043 - 0,12	Radial Clearance
$G_{max}$	0,12 mm	Radial clearance, maximum
$G_{min}$	0,043 mm	Radial clearance, minimum

**Mounting dimensions**

$r_{1smin}$	1 mm	Edge Spacing
$d_1$	66,8 mm	Outer flange diameter inner ring



### Temperature range

T <sub>min</sub>	-60 °C	Operating temperature min.
T <sub>max</sub>	200 °C	Operating temperature max.