


The Timken Company

4500 Mt Pleasant St. NW

N. Canton, OH 44720

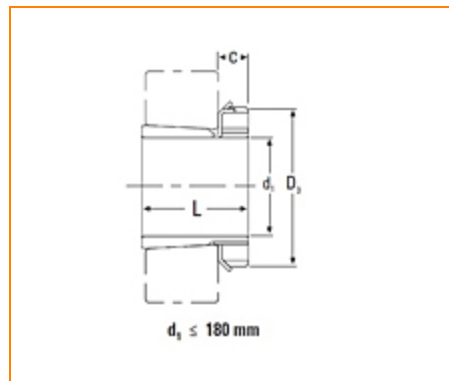
Phone: (234) 262-3000

E-Mail: CustomerCAD@timken.com • **Web site:** www.timken.com

Part Number H2314, Metric H Adapter Sleeve

- Safe and effective tapered bore bearing assembly.
- Includes mounting sleeve, locknut and lockwasher or lockplate.
- Other dimensions may be available, consult your Timken sales representative.

* Adapters with a C1 dimension use a lockplate as the locking device as shown in the illustration; otherwise, a lockwasher is used as the locking device.

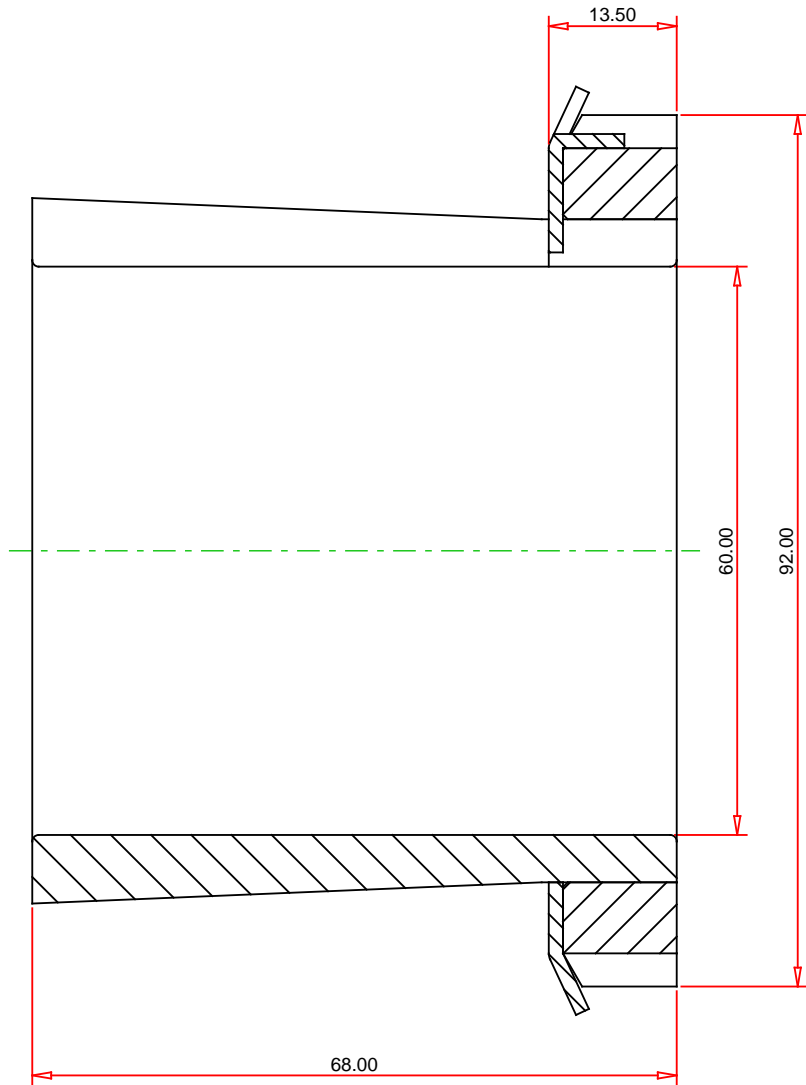


Specifications

d₁	60 mm
L	68 mm
C¹	14 mm
Thread G	M70x2
D₃	92 mm
Locknut	KM14
Lockwasher and Lockplates	MB14
Appropriate Hydraulic Nut	HMV14



¹ Adapters with a C1 dimension use a lockplate as the locking device as shown in the illustration; otherwise, a lockwasher is used as the locking device.



METRIC UNITS

TIMKEN[®]

H2314
Metric H Adapter Sleeve

THE TIMKEN COMPANY
NORTH CANTON, OHIO USA