

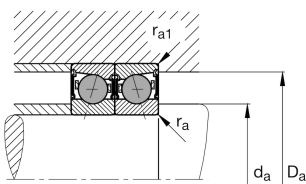
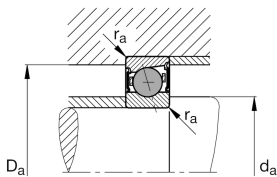
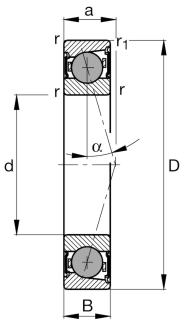
**FAG****HCB7208-E-2RSD-T-P4S-UL**

Spindle bearing

Spindle bearing HCB7208..-E-2RSD, adjusted, in pairs or sets, contact angle $\alpha = 25^\circ$, with ceramic balls, lip seals on both sides, non-contact, restricted tolerances

Materiálové číslo Schaeffler:
0390384080000

Technické informace



Vaše aktuální varianta produktu

Contact angle	E	Contact angle 25°
Sealing	2RSD	Non-contact sealed on both sides and greased "for life"
Outer shape	Standard	Standard
Cage	T	Laminated fabric cage
Tolerance class	P4S	tolerance class P4S, FAG standard better than P4 to DIN 620
Arrangement bearing set	U	Single bearing
Preload	L	preload light

Main Dimensions & Performance Data

d	40 mm	Bore diameter
D	80 mm	Outside diameter
B	18 mm	Width
C_r	31.000 N	Basic dynamic load rating, radial
C_{0r}	14.700 N	Basic static load rating, radial
C_{ur}	1.190 N	Fatigue load limit, radial
n_G Grease	20.000 1/min	Limiting speed for grease lubrication
$\approx m$	323,49 g	Hmotnost



Mounting dimensions

d_a	48 mm	Diameter shaft shoulder
d_a	H12	Diameter shaft shoulder clearance
D_a	72 mm	Shoulder diameter outer ring
D_a	H12	Shoulder diameter outer ring clearance
$r_{a \max}$	1 mm	Maximum recess radius
$r_{a1 \max}$	0,6 mm	Maximum recess radius
a	23 mm	Distance between the apexes of the pressure cones

Dimensions

r_{\min}	1,1 mm	Minimum chamfer dimension
$r_{1 \min}$	1,1 mm	Minimum chamfer dimension
α	25 °	Contact angle

Temperature range






T_{\min}	-30 °C	Operating temperature min.
T_{\max}	80 °C	Operating temperature max.

Additional information

F_{VL}	121 N	Preload force light
F_{VM}	485 N	Preload force medium
F_{VH}	1.059 N	Preload force heavy
K_{aEL}	347 N	Lift-off force light
K_{aEM}	1.432 N	Lift-off force medium
K_{aEH}	3.208 N	Lift-off force heavy
c_{aL}	98 N/μm	Axial rigidity light
c_{aM}	162 N/μm	Axial rigidity medium
c_{aH}	220 N/μm	Axial rigidity heavy



Vlastnosti

-  Radiální zatížení
-  Axiální zatížení v jednom směru
-  Celoživotní mazání bez nutnosti údržby
-  Mazání (plastickým mazivem)
-  Utěsněné na obou stranách