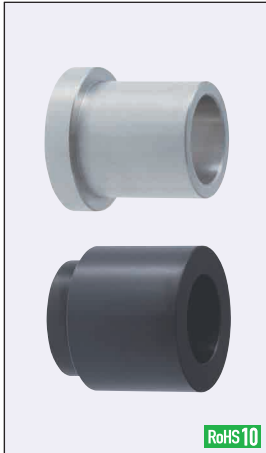


Stepped Spacers



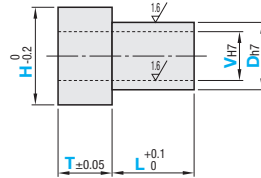
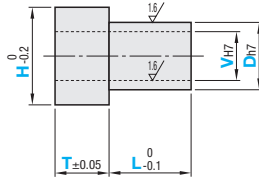
RoHS10

Type	L Tolerance	Material	Surface Treatment
DCLB	0 -0.1	EN 1.1191 Equiv.	Black Oxide
DCLM			Electroless Nickel Plating
DCLS			-
MCLB	+0.1 0	EN 1.1191 Equiv.	Black Oxide
MCLM			Electroless Nickel Plating
MCLS			-

6.3 / (1.6)

L Tolerance 0
-0.1

L Tolerance +0.1
0



Circumference C0.5 or Less

Part Number	D _{H7} 0.5mm Increment	V _{H7} 0.5mm Increment	H 0.5mm Increment	T 0.1mm Increment	L 0.1mm Increment	Unit Price L Tolerance -0.1-0			Unit Price L Tolerance 0~+0.1				
						DCLB	DCLM	DCLS	MCLB	MCLM	MCLS		
L Tolerance 0~-0.1 DCLB DCLM DCLS	5.0~10.0	2.0~8.0 (V≤D-2)	7.0~16.0 (D+2≤H≤D+6)	1.0~20.0	1.0~ 5.0								
					5.1~10.0								
					10.1~25.0								
					25.1~40.0								
	10.5~20.0	2.0~18.0 (V≤D-2)	12.5~26.0 (D+2≤H≤D+6)		1.0~ 5.0								
					5.1~10.0								
					10.1~25.0								
					25.1~40.0								
	L Tolerance +0.1~0 MCLB MCLM MCLS	20.5~30.0	2.0~28.0 (V≤D-2)		22.5~40.0 (D+2≤H≤D+10)	1.0~20.0							
						20.1~30.0							
						30.1~40.0							
						40.1~50.0							
30.5~40.0	6.0~36.0 (V≤D-4)	32.5~50.0 (D+2≤H≤D+10)	1.0~20.0										
			20.1~30.0										
			30.1~40.0										
			40.1~50.0										
40.5~50.0	10.0~44.0 (V≤D-6)	42.5~60.0 (D+2≤H≤D+10)	1.0~20.0										
			20.1~30.0										
			30.1~40.0										
			40.1~50.0										

Common Machining Conditions: ① L+T≤Vx8 ② When V≥8 and L+T≥Vx4, intermediate clearance is added.



Ordering Example

Part Number - D - V - H - T - L
DCLS - D25.5 - V12.5 - H33.5 - T10.7 - L40.2

Central relief

