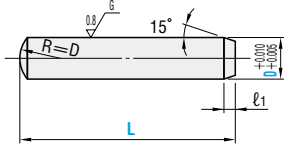


# DOWEL PINS

RoHS

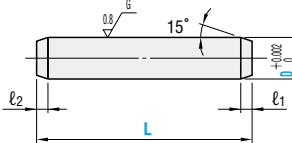


MS (Straight type)



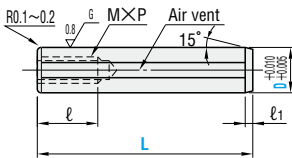
M SUJ2  
H 58HRC~

MSV (High precision type)



M SUJ2  
H 58HRC~

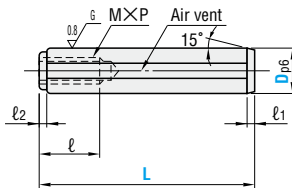
MSTP (Tapped precision type)



⊕ If L dimension is 10 with D5-6, the pilot hole for the tap may go all the way through.

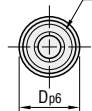
M SUJ2  
H 58HRC~

MST (Tapped p6 type)



⊕ If L dimension is 10 with D5-6, the pilot hole for the tap may go all the way through.

(Identifying groove)



M SUJ2  
H 45~50HRC

⊕ ℓ1·ℓ2 dimensions are values for reference only. The actual values at the outer diameter grinding process may be larger than the catalog values.

ℓ1	Catalog No.		L	Base unit price 1~99 pcs.	Volume discount unit price		
	Type	D			100~499	500~1999	2000~4000
0.4	1	6 8 10					
		1.5	6 8 10				
1.0	2	10 15					
		6 8	20				
		2.5	8 10 15 20				
		6	25 30				
1.5	3	10 15 20					
		6 8	25 30 35 40				
		4	10 15 20				
		8	25 30 35 40 45 50				
2.0	5	8	35 40 45 50				
		6	15 20 25 30				
		8 10	35 40 45 50 55 60				
		8	30 40 50				
2.5	8	10 15 20 25	35 45 55 60 65 70 80				
		40 50 60					
		10	15 20 25 30 35 45 55 60 65 70 80				
		40 50 60					
3.0	10	15 20 25 30 35 40 45 50 55 60 65 70 80					
		40 50 60					
		12	20 25 30 35 45 55 60 70 80				
		40 50 60					
3.5	13	30 40 50 60 70 80					
		30 40 50 60 70 80					

Quotation

ℓ1	ℓ2	Catalog No.		L	Base unit price 1~99 pcs.	Volume discount unit price		
		Type	D			100~499	500~1999	2000~4000
1.0	0.2	MSV	2	6 8 10				
			3	8 10 15 20 25 30				
			4	10 15 20 25 30				
			5	10 15 20 25 30				
1.5	0.5	MSV	6	10 15 20 25 30				
			8	20 30 40				
			10	30 40 50 60				
			10	30 40 50 60				

Quotation

⊕ The high-precision dowel pins are measured in a constant temperature chamber.

ℓ1	M P	ℓ	D	Catalog No.		L	Base unit price 1~99 pcs.	Volume discount unit price		
				Type	D			100~499	500~1999	2000~4000
1.5	3	*6	+0.010 +0.005	MSTP	5	10 15 20 25 30				
					6	20 30				
					10 15	25 35 40 50				
					8	15 20 25 30 35 40 45 50 60 70 80				
2.0	5	*8	+0.010 +0.005	MSTP	10	15 20 25 30 35 40 45 50 60 70 80				
					12	20 30 40 50 60 70 80				
					13	40 50 60 70 80				
					16	40 50 60 70 80				
2.5	6	*10	+0.010 +0.005	MSTP	10	15 20 25 30 35 40 45 50 60 70 80				
					12	20 30 40 50 60 70 80				
					13	40 50 60 70 80				
					16	40 50 60 70 80				
3.0	8	*15	+0.010 +0.005	MSTP	10	15 20 25 30 35 40 45 50 60 70 80				
					12	20 30 40 50 60 70 80				
					13	40 50 60 70 80				
					16	40 50 60 70 80				

Quotation

⊕ \* If D=5, then ℓ=6 is a value for reference only. ⊕ \* Only if D=6 and L=10, then ℓ=6.

ℓ1	ℓ2	M P	ℓ	Dp6	Catalog No.		L	Base unit price 1~99 pcs.	Volume discount unit price		
					Type	D			100~499	500~1999	2000~4000
1.5	0.5	3	*6	+0.020 +0.012	MST	5	10 15 20 25 30				
						6	20 30				
						10 15	25 35 40 50				
						8	15 20 25 30 35 40 45 50 60 70 80				
2.0	0.7	5	*8	+0.024 +0.015	MST	10	15 20 25 30 35 40 45 50 60 70 80				
						12	20 30 40 50 60 70 80				
						13	40 50 60 70 80				
						16	40 50 60 70 80				
2.5	1.0	6	*10	+0.029 +0.018	MST	10	15 20 25 30 35 40 45 50 60 70 80				
						12	20 30 40 50 60 70 80				
						13	40 50 60 70 80				
						16	40 50 60 70 80				
3.0	1.5	8	*18	+0.035 +0.022	MST	10	15 20 25 30 35 40 45 50 60 70 80				
						12	20 30 40 50 60 70 80				
						13	40 50 60 70 80				
						16	40 50 60 70 80				

Quotation

⊕ \* If D=5, then ℓ=6 is a value for reference only. ⊕ \* Only if D=6 and L=10, then ℓ=6.