



Miniature Linear Guides

Short Blocks, Light Preload / Slight Clearance

Features: Short Block Type of industry-standard spec. **20% more compact** than standard blocks.

Industry Standard

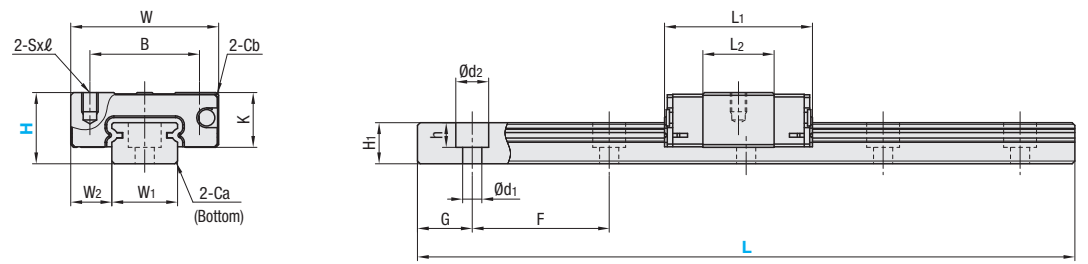


| Material Hardness | Type | | MX (Lubrication Unit) | L Dimension | Number of Blocks |
|---------------------------|-----------------------------|------------------------------------|------------------------------|--------------|------------------|
| | Light Preload High Grade | Slight Clearance Standard Grade | | | |
| Stainless Steel 56HRC~ | SSEBS | SSEBSZ | Blank: None -MX: Provided | Selectable | 1 |
| | SSE2BS | SSE2BSZ | | | 2 |
| | SSEBSL | SSEBSLZ | | Configurable | 1 |
| | SSE2BSL | SSE2BSLZ | | | 2 |

Heat Resistant Temperature: -20 ~ 80°C

RoHS 10

- This Type has the same fitting dimensions as the other company products, and thus, can be substituted for them.
- Blocks and rails are not sold as separate items. This Type has guaranteed radial clearances and accuracies as sets of blocks and rails.



For L Configurable, G dimensions differ from those shown in the table below. For details, see P531

- Precautions for Use**
 - Blocks are equipped with retainers (wire) to prevent balls from falling off. For how to handle the blocks, see P525.
 - Radial clearances and accuracies are not guaranteed if the blocks and rails are interchanged from the original set combinations.
 - Straight grooves are provided on datum planes. Be sure to match the datum lines when using.
 - Rails cannot be connected end to end.
 - The accuracy of Linear Guides is guaranteed after mounting the rail (after fastening screws on the rail and pushing it onto the datum plane).
 - Minor bending of the rail will be adjusted after being mounted and will not affect the performance.
- Accessory**
 - H8 comes with cap screws (M2x6).
- Others**
 - Filled with Lithium soap based grease (Multemp Grease PS2 by Kyodo Yushi Co., Ltd.).
 - For operating life calculation, see P527.
 - For operating life calculations, use our free calculation software from http://download.misumi.jp/mol/fa_soft.html.
 - The MX type is greased with a lithium complex grease (TOUGHLIX GREASE MP2, made by JXTG Nippon Oil & Energy Corporation).

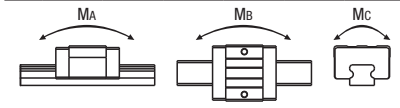
| Part Number | Type | MX | H | L | Block Dimension | | | | Guide Rail Dimension | | | | | | | | | |
|--------------------------------------|--|------------------------------|----|-----------------|-----------------|------|----|--------|----------------------|-----|-----|----|-----|-----|-----|------------------------------|----|-----|
| | | | | | W | L1 | B | Sxℓ | L2 | K | Cb | W1 | W2 | H1 | Ca | Counterbored Hole d1xd2xh | F | G |
| SSEBS SSE2BS SSEBSL SSE2BSL | SSEBSZ SSE2BSZ SSEBSLZ SSE2BSLZ | Blank: None -MX: Provided | 8 | 40~130 (55) | 17 | 19.6 | 12 | M2x2.5 | 9.6 | 6.5 | 0.3 | 7 | 5 | 4.7 | 0.3 | 2.4x4.2x2.3 | 15 | 5 |
| | | | 10 | 35~275 (75) | 20 | 22.9 | 15 | M3x3 | 11.9 | 7.8 | 0.3 | 9 | 5.5 | 5.5 | 0.3 | 3.5x6x3.5 | 20 | 7.5 |
| | | | 13 | 45~470 (95) | 27 | 27 | 20 | M3x3.5 | 13 | 10 | 0.5 | 12 | 7.5 | 7.5 | 0.5 | 3.5x6x4.5 | 25 | 10 |
| | | | 16 | 70~670 (110) | 32 | 32.7 | 25 | M3x4 | 17.7 | 12 | 0.5 | 15 | 8.5 | 9.5 | 0.5 | 3.5x6x4.5 | 40 | 15 |

Dimensions in () are for 2-Block Type.

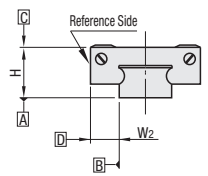
kgf~Nx0.101972

Unit: μm

| H | Basic Load Rating | | | Allowable Static Moment | | | Mass | |
|----|-------------------|-------------------|-----------|-------------------------|-----------|-------------|--------------------|--|
| | C (Dynamic) kN | Co (Static) kN | MA N·m | Mb N·m | Mc N·m | Block kg | Guide Rail kg/m | |
| 8 | 0.79 | 1.27 | 1.9 | 1.6 | 4.6 | 0.008 | 0.19 | |
| 10 | 1.16 | 1.68 | 3.1 | 2.6 | 7.9 | 0.015 | 0.31 | |
| 13 | 1.63 | 2.38 | 5.2 | 4.4 | 14.8 | 0.025 | 0.61 | |
| 16 | 3.08 | 4.23 | 12.3 | 10.3 | 32.6 | 0.05 | 1.02 | |



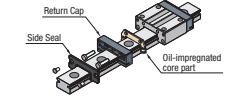
Preload and Accuracy Standards



| Specifications | Light Preload, High Grade | Slight Clearance, Standard Grade |
|--|------------------------------|--|
| Radial Clearance | -3~0 | 0~+15 |
| Height H Tolerance | ±20 | ±20 |
| Pair Variation of Height H | 15 | 40 |
| Width W2 Tolerance | ±25 | ±25 |
| Pair Variation of Width W2 | 20 | 40 |
| Running Parallelism of Plane C against Plane A | See P525 | |
| Running Parallelism of Plane D against Plane A | See P525 | |

Slight Clearance Type has clearance (Gap) between rails and blocks. If precision / rigidity is required, select Light Preload Type.

Lubrication Unit MX



The same block size as existing products!
The oil-impregnated porous core part has been built into the product.

- Advantages of the Lubrication Unit MX:
 - Provides long-term maintenance-free operation.
 - Reduces maintenance costs.



Ordering Example

| Part Number | L |
|-------------|-----------------------------|
| SSE2BS10 | 275 |
| SSEBN-MX10 | 275 (With Lubrication Unit) |
| SSE2BS10L | 175 (L Type Greased) |
| SSE2BS10G | 175 (G Type Greased) |

Alternative grease types available. See P531



Alterations

| Part Number | L | (MC, RLC, LLC, B3, B4) |
|-------------|-----|------------------------|
| SSE2BSL16 | 450 | MC |

| H | L | Unit Price | | | |
|----|-----|------------|--------|--------|---------|
| | | SSEBS | SSE2BS | SSEBSZ | SSE2BSZ |
| 8 | 40 | | | | |
| | 55 | | | | |
| | 70 | | | | |
| | 85 | | | | |
| | 100 | | | | |
| | 115 | | | | |
| | 130 | | | | |
| 10 | 35 | | | | |
| | 55 | | | | |
| | 75 | | | | |
| | 95 | | | | |
| | 115 | | | | |
| | 135 | | | | |
| | 155 | | | | |
| 13 | 175 | | | | |
| | 195 | | | | |
| | 215 | | | | |
| | 235 | | | | |
| | 255 | | | | |
| | 275 | | | | |
| | 295 | | | | |
| 16 | 320 | | | | |
| | 345 | | | | |
| | 370 | | | | |
| | 395 | | | | |
| | 420 | | | | |
| | 445 | | | | |
| | 470 | | | | |
| 16 | 510 | | | | |
| | 550 | | | | |
| | 590 | | | | |
| | 630 | | | | |
| | 670 | | | | |

| Alterations | Code | Spec. | | | | | | | | | | | | | | | | | | | | |
|------------------------|---------------------------------------|--|-------------------|----|---|----|----|-------|----|--|----|-----|--|---|----|---|--|--|----|----|--|--|
| Tapped Hole | MC | Changes the rail mounting holes from counterbored holes to tapped holes. <table border="1"> <tr><td>H</td><td>MC</td></tr> <tr><td>8</td><td>M3</td></tr> <tr><td>10</td><td>M4</td></tr> <tr><td>13</td><td></td></tr> <tr><td>16</td><td>M5</td></tr> </table> | H | MC | 8 | M3 | 10 | M4 | 13 | | 16 | M5 | | | | | | | | | | |
| H | MC | | | | | | | | | | | | | | | | | | | | | |
| 8 | M3 | | | | | | | | | | | | | | | | | | | | | |
| 10 | M4 | | | | | | | | | | | | | | | | | | | | | |
| 13 | | | | | | | | | | | | | | | | | | | | | | |
| 16 | M5 | | | | | | | | | | | | | | | | | | | | | |
| Rail End Cut | Left End Cut LLC Right End Cut RLC | Cuts rail ends. <table border="1"> <tr><td colspan="4">Ordering Code LLC</td></tr> <tr><td>H</td><td>L Cut</td><td>N</td><td></td></tr> <tr><td>10</td><td>2.5</td><td></td><td>5</td></tr> <tr><td>13</td><td>5</td><td></td><td></td></tr> <tr><td>16</td><td>10</td><td></td><td></td></tr> </table> <ul style="list-style-type: none"> Applicable to Selectable Type only. Overall length will be shorter by cutting. Not applicable to H8. Not applicable to L35 of H10 and L45 of H13. | Ordering Code LLC | | | | H | L Cut | N | | 10 | 2.5 | | 5 | 13 | 5 | | | 16 | 10 | | |
| Ordering Code LLC | | | | | | | | | | | | | | | | | | | | | | |
| H | L Cut | N | | | | | | | | | | | | | | | | | | | | |
| 10 | 2.5 | | 5 | | | | | | | | | | | | | | | | | | | |
| 13 | 5 | | | | | | | | | | | | | | | | | | | | | |
| 16 | 10 | | | | | | | | | | | | | | | | | | | | | |
| 3-Block Specifications | B3 | Add 2 blocks to 1-block product to ship as 3-block separate item. <ul style="list-style-type: none"> There are restrictions for the L dimension length. See "Selectable Shortest Rail Length" for details. Selection Example: SSEBS10-120-B3 | | | | | | | | | | | | | | | | | | | | |
| 4-Block Specifications | B4 | Add 3 blocks to 1-block product to ship as 4-block separate item. <ul style="list-style-type: none"> There are restrictions for the L dimension length. See "Selectable Shortest Rail Length" for details. Selection Example: SSEBS16-190-B4 | | | | | | | | | | | | | | | | | | | | |

| Additional Block Price (Same Price for High/Standard Grade) | | | | Selectable Shortest Rail Length for B3/B4 | | | |
|---|-----------------|-------------|-----------------|---|----|-----------------|-----------------|
| H | B3: Price Adder | | B4: Price Adder | | H | B3 (3-block) | B4 (4-block) |
| | Standard | Standard MX | Standard | Standard MX | | | |
| 8 | | | | | 8 | 85 | 100 |
| 10 | | | | | 10 | 95 | 135 |
| 13 | | | | | 13 | 120 | 145 |
| 16 | | | | | 16 | 150 | 190 |

Options for Linear Guide

| Position Retaining Parts | Block / Rail Fixing Parts |
|---|---|
| <ul style="list-style-type: none"> Rail Push Plates | <ul style="list-style-type: none"> Rail Lock |
| <ul style="list-style-type: none"> Rail Height Adjusting Blocks | <ul style="list-style-type: none"> Linear Guide Lock Units |
| <ul style="list-style-type: none"> Block Derailment Prevention Parts | <ul style="list-style-type: none"> Stopper Bolts |

EX Example

Short Block

Standard Block

Space Savings by approx. 20%!