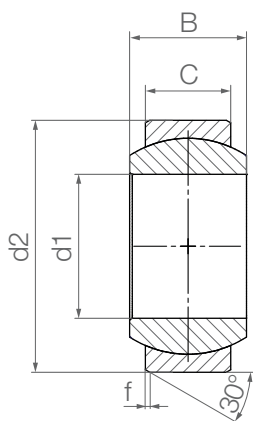


Spherical bearings: EGLM



- Predecessor model of EGLM-LC
- Compensation of misalignment and edge loads
- Corrosion-resistant
- Vibration-dampening
- Excellent vibration dampening
- Suitable for rotating, oscillating and linear movements

Order key

Type Size

E GLM-04

E series	Spherical bearings	Metric	Inner Ø [mm]
----------	--------------------	--------	--------------

Material:

Housing: **igumid® G** ▶ **Page 1190**

Spherical ball:

Spherical balls with 04-30mm diameters made of **iglidur® W300** ▶ **Page 175**

Spherical balls with 40mm and 80mm diameter made of **iglidur® J** ▶ **Page 163**

Other spherical ball materials upon request (Ø 04-12mm and 40mm) ▶ **Page 993**



Online service life calculation

▶ www.igus.eu/igubal-expert

Technical data and dimensions [mm]

Part No.	Max. static load on the housing		Max. tightening torque through ball [Nm]	d1 E10	d2	B	C	f	Weight [g]	Max. pivot angle
	radial [N]	axial ²⁹⁾ [N]								
EGLM-04	600	50	1.0	4	12	5	3.0	0.5	0.4	37°
EGLM-05	1,000	130	2.0	5	14	6	4.0	0.5	0.8	33°
EGLM-06	1,200	150	2.5	6	14	6	4.0	0.5	0.9	27°
EGLM-08	1,800	175	7.0	8	16	8	5.0	0.5	1.2	24°
EGLM-10	2,500	400	14.0	10	19	9	6.0	0.5	1.9	24°
EGLM-12	3,800	650	25.0	12	22	10	7.0	0.5	2.8	21°
EGLM-15	5,500	1,000	30.0	15	26	12	9.0	0.5	4.5	21°
EGLM-16	6,000	1,150	32.0	16	28	13	9.5	0.5	6.0	21°
EGLM-17	6,300	1,200	35.0	17	30	14	10.0	1.0	6.9	21°
EGLM-20	9,000	1,400	40.0	20	35	16	12.0	1.0	11.0	18°
EGLM-25	14,000	2,900	55.0	25	42	20	16.0	1.0	20.0	16°
EGLM-30	17,000	4,000	70.0	30	47	22	18.0	1.0	26.0	13°
EGLM-40-J	22,500	2,500	80.0	40	62	28	22.0	1.0	57.0	15°
EGLM-80-J	50,000	11,300	–	80	120	55	45	2.0	400.0	18°

²⁹⁾ The maximum static axial load is determined when fitted into a blind housing